

# CPAIS 2.18 Release Notes

Release Date: July 10, 2015

## Purpose

Premier Support for Oracle Application Server 10g has ended. The purpose of this release is to migrate the CPAIS Real Property application to Oracle's WebLogic 11G application server.

## Enhancement

With the upgrade to WebLogic 11G application server, CPAIS will be hosted on an updated version of server software that is supported by Oracle and will no longer require JInitiator to be installed on the user's workstations. This upgrade will simplify desktop administration and ensure future supportability of the application.

All coding changes were limited to addressing any problems encountered as a result of the upgrade. However, a new CPAIS Main Menu has been implemented and it has a new look and feel. Single click on a content title to see a description of the module and **double click on a content title to launch the selected form, preformatted report, or user view**. Click [here](#) for additional details on the new Main Menu.

No additional enhancements or bug fixes were addressed in this release. For information about the changes included in any specific prior versions of CPAIS, please see the [CPAIS Corporate Website](#).

## Discoverer Reports

The Discoverer reports are no longer available. A search is underway for a replacement Ad Hoc Reporting Tool. In the interim, if there are no existing preformatted reports, user views, or exports that provide the needed data, Financial Management Services (FMS), Technical Innovation Services Division (TISD), Development Branch will run the report and provide the data. Please contact the FMS [HelpDesk](#) and provide the name of the Discoverer report you would have previously run and any parameters used to run the report. The Development Branch will run the report and deliver the output in an Excel spreadsheet. A list of the Discoverer reports can be found [here](#).

## Minimum Desktop Requirements

The following are the minimum requirements needed on the workstation to run the 11g CPAIS application:

Windows: Windows 7

Browser: Internet Explorer 9

Java: 1.7.0\_51

# CPAIS 2.18 Release Notes

Release Date: July 10, 2015

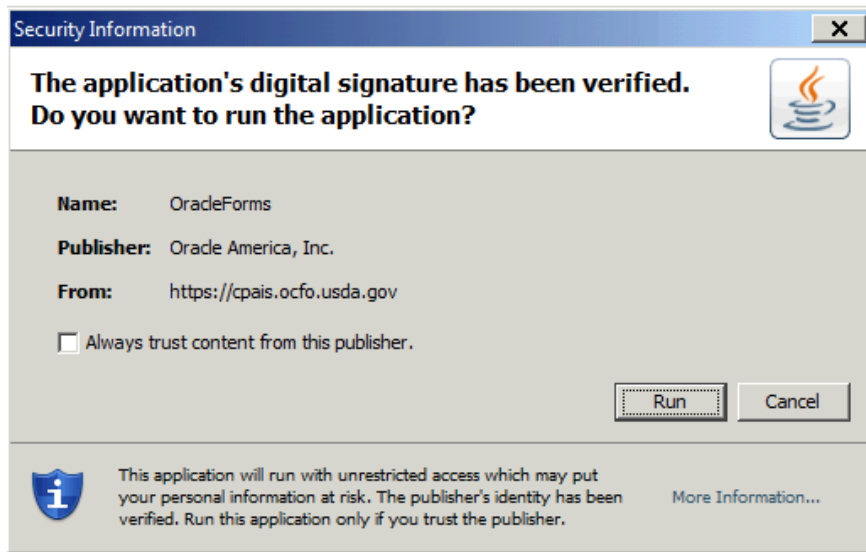
## Connecting To CPAIS

Types the following URL directly in the browser:

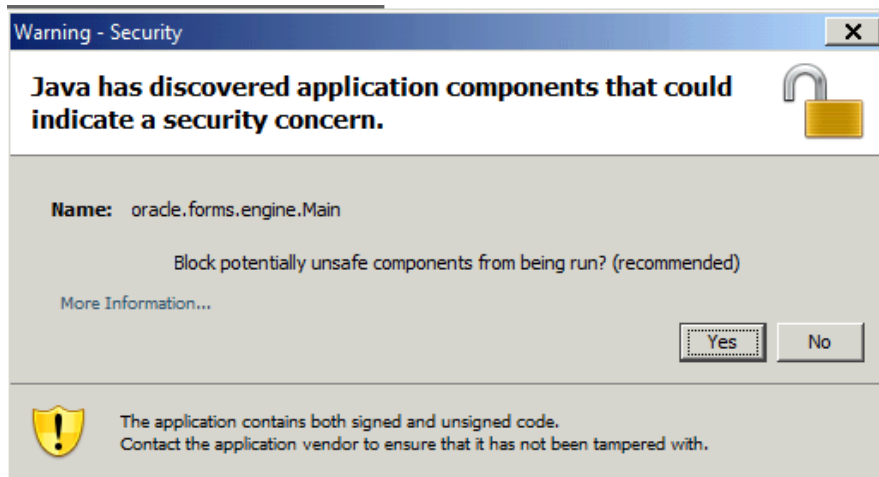
[https://cpais.ocfo.usda.gov/prd\\_rp/index.html](https://cpais.ocfo.usda.gov/prd_rp/index.html)

## Java Pop-ups

The following pop-ups may be displayed after successful logon.



Select **Run** on the Security Information pop-up.



Select **No** on the Warning – Security pop-up.

# CPAIS 2.18 Release Notes

Release Date: July 10, 2015

## CPAIS User Name

After successful logon, note that your CPAIS User Name is now prefaced with RP\_. That is an internal user name only. You will continue to log into CPAIS with your eAuth account.

## Session Time Out

As per NIST 800-53 **Revision 4 controls** systems have to address AC-12, Session Termination. The information system automatically terminates a user session after 30 minutes of inactivity. This control has been implemented in Release 2.18 and therefore any window left inactive for more than 30 minutes will be timed out, this includes the Main Menu.

## Help

Request assistance:

**Web:** Via the [FMS](#) page

**Email:** [FMSC.help@usda.gov](mailto:FMSC.help@usda.gov)

**Phone:** 877-243-3072 or 504-426-5695

## Troubleshooting

Visit the [CPAIS Corporate Website](#) for troubleshooting tips.

# CPAIS 2.18 Release Notes

Release Date: July 10, 2015

## Main Menu Details

### Old Main Menu

Home > CPAIS Basics > The Main Menu

**CPAIS Basics**  
**The Main Menu**

After you log on to CPAIS, the CPAIS Main Menu displays. From here, you can open the data entry forms, reports, Discoverer reports, or User Views.

The screenshot shows the CPAIS Main Menu interface. At the top left is the USDA logo and the text 'CPAIS Main Menu'. At the top right are links for 'Print', 'Log Out', and 'Help'. Below these are four tabs: 'Forms', 'Discoverer', 'Reports', and 'User Views'. On the left is a navigation frame with a tree view containing 'Real Property Accounting', 'Real Property Management', and 'System Management'. The main content area is titled 'Forms' and contains a list of modules, each with a 'Show' button. A record navigator at the bottom of the list shows 'Previous', '1-15 of 21', and 'Next 6'. Numbered callouts 1 through 5 are placed over the interface to highlight specific features.

#### The CPAIS Main Menu

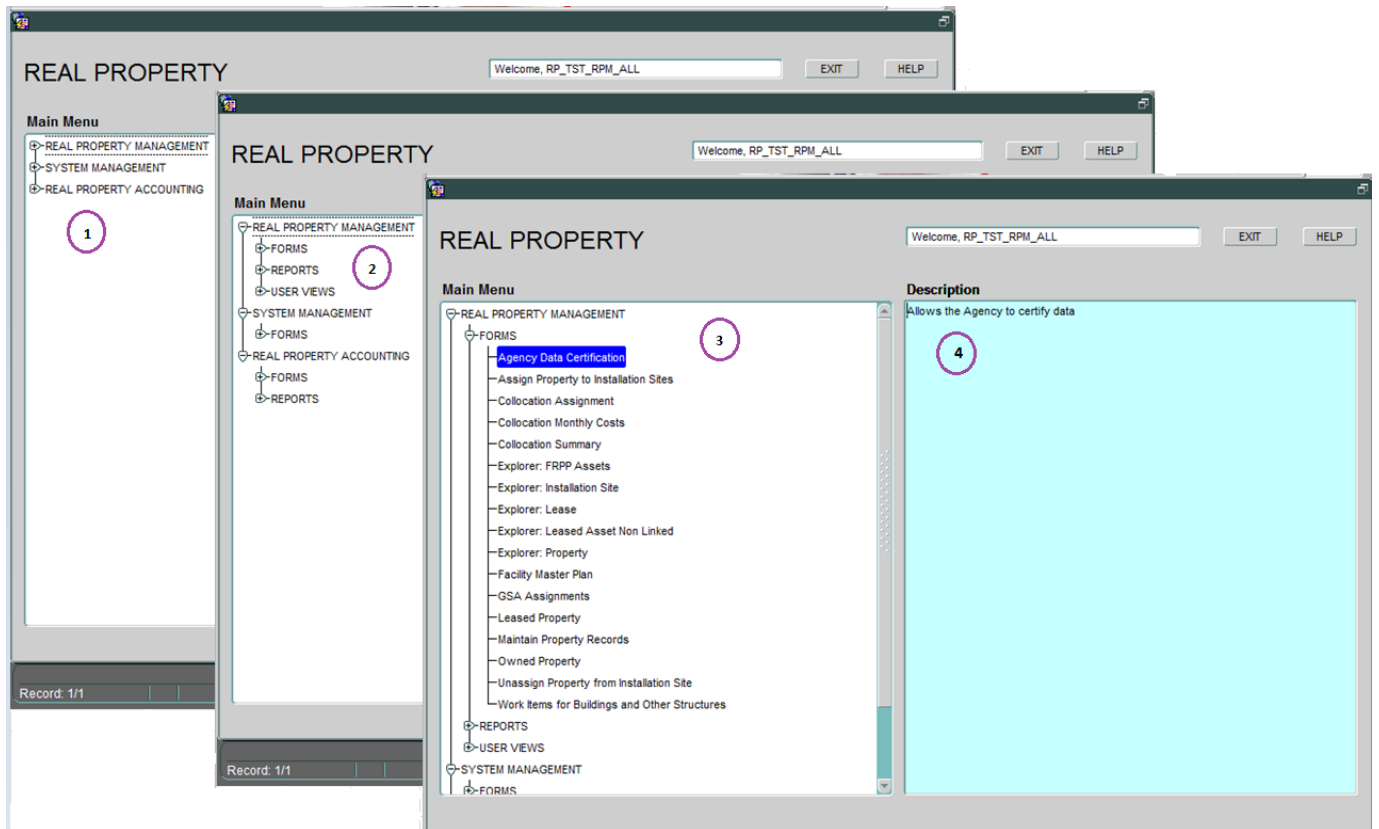
The numbers on the image above correspond to the following descriptions:

Item	Name	Description
1	Navigation Frame	From this menu, select the topic you want to work with. Click the triangle next to the topic to expand the menu and expose additional entries. Once you have found the topic you are looking for, click it. All the data entry forms and reports associated with that topic will appear in the main content frame to the right.
2	Tab Bar	The tab bar organizes the CPAIS Main Menu into four categories: Forms, Reports, Discoverer, and User views. Once you select a topic from the Main Menu's navigation frame, one of the tabs to view the topic's corresponding forms, preformatted reports, Discoverer reports, or user views.
3	Content Frame	When you select a topic in the navigation frame, the main content frame will display all forms, reports, etc. available for that topic.
4	Record Navigator	The Record Navigator appears when there are 15 or more records available for the topic you selected in the Navigation Frame. Use your mouse to select the additional items from the list or click <b>Next</b> .
5	Show/Hide tool	Click <b>Show</b> to see a description of the Module.

# CPAIS 2.18 Release Notes

Release Date: July 10, 2015

## New Main Menu



Item	Name	Description
1	Topic Tree	From this menu, select the topic you want to work with.  Click the + next to the topic to expand the menu and expose additional entries. Once you have found the topic you are looking for, click it. All the data entry forms and reports associated with that topic will appear in the main content frame to the right. Click the - next to topic to collapse the tree.
2	Topic Category	The tree organizes the CPAIS Main Menu into three categories: Forms, Reports, and User views. Once you select a topic from the Main Menu's tree, one of the nodes to view the topic's corresponding forms, preformatted reports, or user views.
3	Category Contents	When you select a topic in the navigation frame, the main content frame will display all forms, reports, etc. available for that topic.
4	Description Display	Single click on a content title to see a description of the Module. <b>Double click on a content title to launch the selected form, preformatted report, or user view.</b>

# CPAIS 2.18 Release Notes

Release Date: July 10, 2015

## Discoverer Reports List

### Real Property Accounting

Financial System Transactions sent to CPAIS but Not Yet Loaded  
Monthly Trans  
Trans Loaded  
Trans Sent And Not Yet Returned  
Value Transactions not yet sent to Financial System

### Real Property Management

'EO12512' Site Survey Details  
Agency Space Situation  
Building Inventory - Government Owned and Leased  
Building Occupancy  
Building Security  
Collocation Agreement  
FRPP Property  
GSA Assigned Space Rent Bill Comparison  
GSA Assignment Details  
GSA Assignments with Space and Personnel  
GSA Rent Bill  
Installation and Addresses  
Inventory - Government Owned and Leased  
Inventory Report  
Land Inventory - Government Owned and Leased  
Lease Basics  
Lease Contact Mailing List  
Lease Contacts  
Lease Details  
Lease Notifications  
Lease Rent Escalation Report  
Leased Building Space  
Leased Features  
Leased Land  
Leases with Space and Personnel  
Owned Building Space  
Owned Features  
Owned Land  
Regional Lease Summary Statistics by Asset Type  
Space Utilization Details  
Structures Inventory - Government Owned and Leased

### System Management

User Access Report